

BUG BUSINESS

Biosecurity Requirements explained!

Issue 1
January 2009



BioSecurity

The Transitional Facility Solutions Service
for the New Zealand Import Industry

WWW.BIOSECURITYSOLUTIONS.CO.NZ



The AgriChain Centre

WWW.AGRICHAIN-CENTRE.COM

INTRODUCTION

Welcome to our first Bug Business newsletter which is aimed at keeping you informed on changes to Biosecurity rules and possible actions you may need to take.

There have been a number of changes over the past 5 years to the process of inspecting imported sea containers. The pace of these changes will increase over the next year.

Our Quarterly Newsletter is designed to:

1. Provide simple, easy to understand information on how the Biosecurity rule changes might affect your business.
2. Suggest areas you may need to look at in order to comply with these changes.
3. Provide information on issues raised in training sessions and significant finds by Accredited Persons.

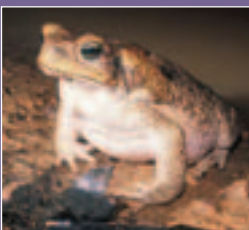
The AgriChain Centre is an Approved Independent Training Provider for MAF Biosecurity New Zealand (MAFBNZ). We have been working with the sea container training programme since it was introduced in 2004.

Since then we have trained thousands of Accredited Persons and Transitional Facility Operators. We have also worked with many companies to ensure that they meet MAF requirements in the most simple, practical and cost effective way possible.

We are passionate about helping you to protect New Zealand's unique environment, human health status and economic well being from invasive pests and diseases that could possibly arrive with the products you import.

As business owners we also know that the regulatory process should, if managed well, not be too much of a burden on the operation of your business. Rules and regulations are a fact of life in business, and Biosecurity rules are there for a very good reason - to protect New Zealand!

*Ministry of Agriculture and Forestry Biosecurity New Zealand
is referred to throughout as MAFBNZ*



MAFBNZ ANNOUNCES IMPLEMENTATION DATE FOR THE NEW STANDARD FOR GENERAL FACILITIES FOR UNCLEARED GOODS (TF-GEN)

The new Transitional Facility General Standard (TF-GEN) will be introduced in **February 2009**.

This new standard will affect all importers with the level of impact on your business varying depending upon the nature of the products you import. This standard replaces a number of standards you may have previously been operating under in the past.

The most obvious changes will be:

- Compulsory attendance of a workshop for Transitional Facility Operators (more on that later)
- Tighter operating procedures that need to be documented
- Increased obligations for the Transitional Facility Operator (more on that later)
- Requirements to undertake regular site assessments of the operating procedures and system

Operating Procedures and Manuals

A more comprehensive operating manual may be required. There is also greater emphasis on operator responsibilities for Biosecurity management at the facility including self assessment / internal audit of the facility's operation.

Training to understand the responsibilities of the operator's role and the specific details that need to be included in the operating manual is compulsory.

What is involved in becoming an Operator?

- Attending the half day workshop (more on that later)
- A police check
- MAF sign off after the site audit

Internal Audit/Assessment Requirements

The new standard will require you to undertake a self assessment of your site and processes. We will write more about this in the April newsletter after the standard is implemented. Talk to us if this seems daunting! We are here to help if you need us.

MAF/BNZ EXTERNAL AUDITS UPDATE

In summary, you will receive two main types of MAFBNZ audits:

1. The annual site audit
2. The sea container audits of no less than 1% of the low risk containers entering the country. (Also called a baseline audit)

The Baseline (Sea Container Audit) Audit is where the major changes will be.

From **February 2009** failure at any stage in a container audit will result in MAFBNZ taking steps to deal with any immediate biosecurity risk. Failure will also result in a more intensive audit programme of your containers.

The audit level will be 100% of the exporter/supplier's consignments in this case.

In other words, if your overseas supplier ships to other companies in New Zealand and a problem is identified elsewhere, your deliveries could be affected as well!

The intensive auditing will be for the next five containers or a period of 12 months whichever occurs first.

Training Locations

The AgriChain Centre provides both Accredited Person training and Transitional Facility Operator Workshops in the following locations:

- North Shore Auckland
- South Auckland
- Hamilton
- Tauranga
- Napier
- Palmerston North
- New Plymouth
- Wellington
- Nelson
- Christchurch
- Dunedin
- Invercargill

TO MAKE A BOOKING

Phone 0800 247 424

Email:
jwallace@agrichain-centre.com

www.biosecuritysolutions.co.nz



TRAINING REQUIREMENTS EXPLAINED

WHAT IS THE DIFFERENCE BETWEEN ACCREDITED PERSON (AP) AND OPERATOR (TFO) TRAINING REQUIREMENTS?

This can be confusing, especially for those people who do both jobs! MAF/BNZ estimates that 75% of Transitional Facilities import less than 12 containers per year. As a consequence many Operators are also Accredited Persons.

Accredited Person (AP)

This is the person who carries out the Biosecurity checks on the sea containers when they arrive and are being unloaded. Training is required every 2 years.

Transitional Facility Operators (TFO)

This is the person at the facility responsible for the Biosecurity requirements being delivered by the importer. It is typically the person with commercial managerial responsibility for the site.

Deputy Operators

A deputy is required if the Operator has more than one site to manage, is going to be away for an extended period, or where in the absence of the operator there is concern that the Biosecurity Management of the facility may fail.

The two courses are separate, not transferable and compulsory.

The Accredited Persons Course

This course focuses solely on the practical aspects of checking sea containers and provides:

- An overview of what biosecurity means and why it is important for New Zealand
- An understanding of the requirements for checking sea containers and the role of Accredited People at Approved Transitional Facilities
- Information needed by Accredited Persons to carry out an effective check of containers and their contents

The AP Certificate is valid for 2 years. This course has been updated with new material available for 2009 courses.

The Facility Operator Workshop

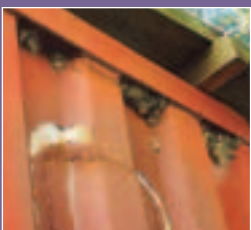
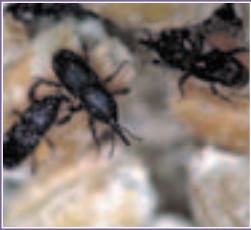
This course focuses on the management responsibilities for the site and looks at:

- What biosecurity is and why it is important
- The pathway that imports take and where the key biosecurity checkpoints are
- The roles and responsibilities of the main players (including you) in biosecurity
- The links between legislation, standards, and your operating manual
- The legal requirements for biosecurity in New Zealand and the consequences of not complying
- The required biosecurity procedures for your own Transitional Facility to meet the Standard

Transitional Facility Operator Training is valid for 4 years

We undertake Accredited Person training and Transitional Facility Operator Workshops throughout New Zealand on a regular basis (see sidebar on the left for locations).

To make a booking phone 0800 247 424.



ACCREDITED PERSON FINDS FOR 2007

Reported finds	Numbers	Reported finds	Numbers
Spiders	655	Animal products	30
Insects	461	Water	12
Non-ISPM 15 Wood products	310	Snails	10
Soil	393	Insect damage	226
Plant products	174	Seeds	303
Reptiles	34	Other (not reported properly)	595

© Ministry of Agriculture and Forestry November 2008

UPDATE ON MAFBNZ CHANGES FOR LOG SHEET REPORTING REQUIREMENTS

From **1 December 2008** MAFBNZ only requires sea container inspection reports (container log sheets) to be submitted when something out of the ordinary has been found.

MAFBNZ require log sheets (or electronic inspection reports) to be sent via the website or by fax, whenever any of the following are found at unpacking:

- Live organisms
- Fungus or contamination on wood packaging
- Other biosecurity contamination such as soil or seeds or leaves that are swept up and placed in the quarantine bin
- Non-ISPM 15 wood packaging material
- Other restricted packaging materials e.g. Straw or used tyres.

Continue to call the MAFBNZ Hotline 0800 809 966 in the event that live organisms are found.

When a sea container is found to be clean and any wood packaging is ISPM15 compliant you **do not** need to send MAFBNZ a log sheet or electronic inspection report. However, facilities will still need to maintain a register of **all** containers received and checks undertaken.

Some companies have used the electronic inspection record as a method of storing records. This will no longer be possible as the MAF system will only take inspection reports with problems identified as above. That means you need to set up your own tracking system or simply continue to fill out the log sheets for every container and retain them on file.

Your register can be in the form of individual records (i.e., log sheets) or as a spreadsheet or even a book dedicated to this purpose.

If you want to look at electronic lodgement processes go to:
www.containerchecks.maf.govt.nz

HOW CAN THE AGRICHAIN CENTRE HELP YOU?

In addition to training we are happy to help you write or review your written procedures and answer any queries you may have. If we are unsure or feel you need more specific advice relating to your site we will refer you to the most appropriate person to help.

For any queries or bookings please call 0800 247 424.